

DARLINGTON CROSSING RETAIL FOR LEASE

110 EXPRESS LANE DARLINGTON, SC 29532



Property Details:

- 2,800 SF Available .
- 44,800 square foot community center anchored by Food Lion).
- Located at the corner of Hwy 52 and S Main Street.
- Co-Tenants include:
Radio Shack, CVS Pharmacy, Great China Restaurant.

Demographic Snapshot (2011)

	3mi	5mi	10mi
Population	12,559	21,684	91,831
Ave. HHI	\$51,143	\$56,730	\$60,897

Traffic Count (SCDOT 2010)

Governor Williams Hwy & Syracuse St. 25,000 AADT



COLLETT & ASSOCIATES

1111 Metropolitan Avenue, Suite 700 Charlotte, NC 28204 704-206-8300 ph 704-335-8654 fx
Mailing Address: P.O. Box 36799 Charlotte 28236-6799

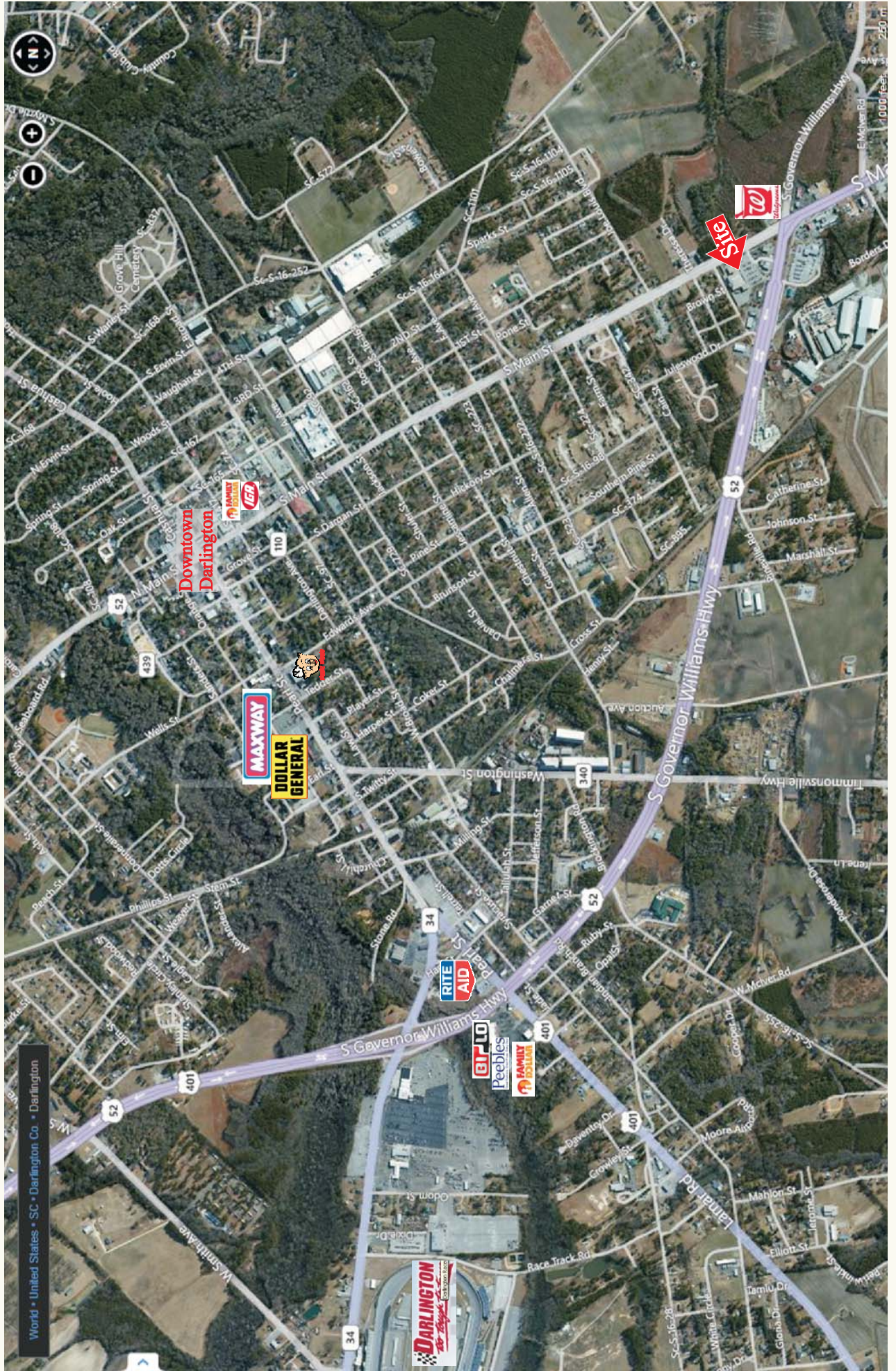
CONTACT:

Spencer Brown
704-206-8326
sbrown@collett.biz
www.collett.biz

AERIAL



AERIAL



SITE PLAN



- A. Great China
- B. AVAILABLE 2,800 SF**
- C. Food Lion

- D. Radio Shack
- E. CVS Pharmacy

**COLLETT &
ASSOCIATES**

SUMMARY PROFILE

1990-2010 Census, 2011 Estimates with 2016 Projections

Calculated using Proportional Block Groups



Lat/Lon: 34.2829/-79.8587

RS1

110 Express Ln		3 mi radius	5 mi radius	10 mi radius
Darlington, SC 29532				
POPULATION	2011 Estimated Population	12,559	21,684	91,831
	2016 Projected Population	13,239	22,945	98,249
	2010 Census Population	12,382	21,344	90,092
	2000 Census Population	12,653	20,430	83,852
	Projected Annual Growth 2011 to 2016	1.1%	1.2%	1.4%
	Historical Annual Growth 2000 to 2011	-0.1%	0.6%	0.9%
	2011 Median Age	38.8	38	37.3
HOUSEHOLDS	2011 Estimated Households	4,992	8,366	36,643
	2016 Projected Households	5,065	8,584	40,303
	2010 Census Households	4,970	8,296	35,662
	2000 Census Households	5,064	7,929	32,575
	Projected Annual Growth 2011 to 2016	0.3%	0.5%	2.0%
	Historical Annual Growth 2000 to 2011	-0.1%	0.5%	1.1%
RACE AND ETHNICITY	2011 Estimated White	44.7%	51.8%	53.0%
	2011 Estimated Black or African American	53.6%	45.7%	43.4%
	2011 Estimated Asian or Pacific Islander	0.2%	0.5%	1.4%
	2011 Estimated American Indian or Native Alaskan	0.2%	0.2%	0.3%
	2011 Estimated Other Races	0.5%	0.6%	0.6%
	2011 Estimated Hispanic	1.1%	1.8%	2.0%
INCOME	2011 Estimated Average Household Income	\$51,143	\$56,730	\$60,897
	2011 Estimated Median Household Income	\$39,739	\$43,509	\$47,646
	2011 Estimated Per Capita Income	\$21,003	\$23,005	\$24,904
EDUCATION (AGE 25+)	2011 Estimated Elementary (Grade Level 0 to 8)	6.6%	6.9%	6.8%
	2011 Estimated Some High School (Grade Level 9 to 11)	14.7%	13.5%	10.5%
	2011 Estimated High School Graduate	38.5%	38.0%	33.9%
	2011 Estimated Some College	16.1%	16.4%	17.5%
	2011 Estimated Associates Degree Only	8.0%	7.9%	8.2%
	2011 Estimated Bachelors Degree Only	11.1%	11.0%	14.8%
	2011 Estimated Graduate Degree	5.0%	6.3%	8.4%
BUSINESS	2011 Estimated Total Businesses	506	732	4,186
	2011 Estimated Total Employees	4,801	7,647	53,119
	2011 Estimated Employee Population per Business	9.5	10.5	12.7
	2011 Estimated Residential Population per Business	24.8	29.6	21.9

This report was produced using data from private and government sources deemed to be reliable. The information herein is provided without representation or warranty.