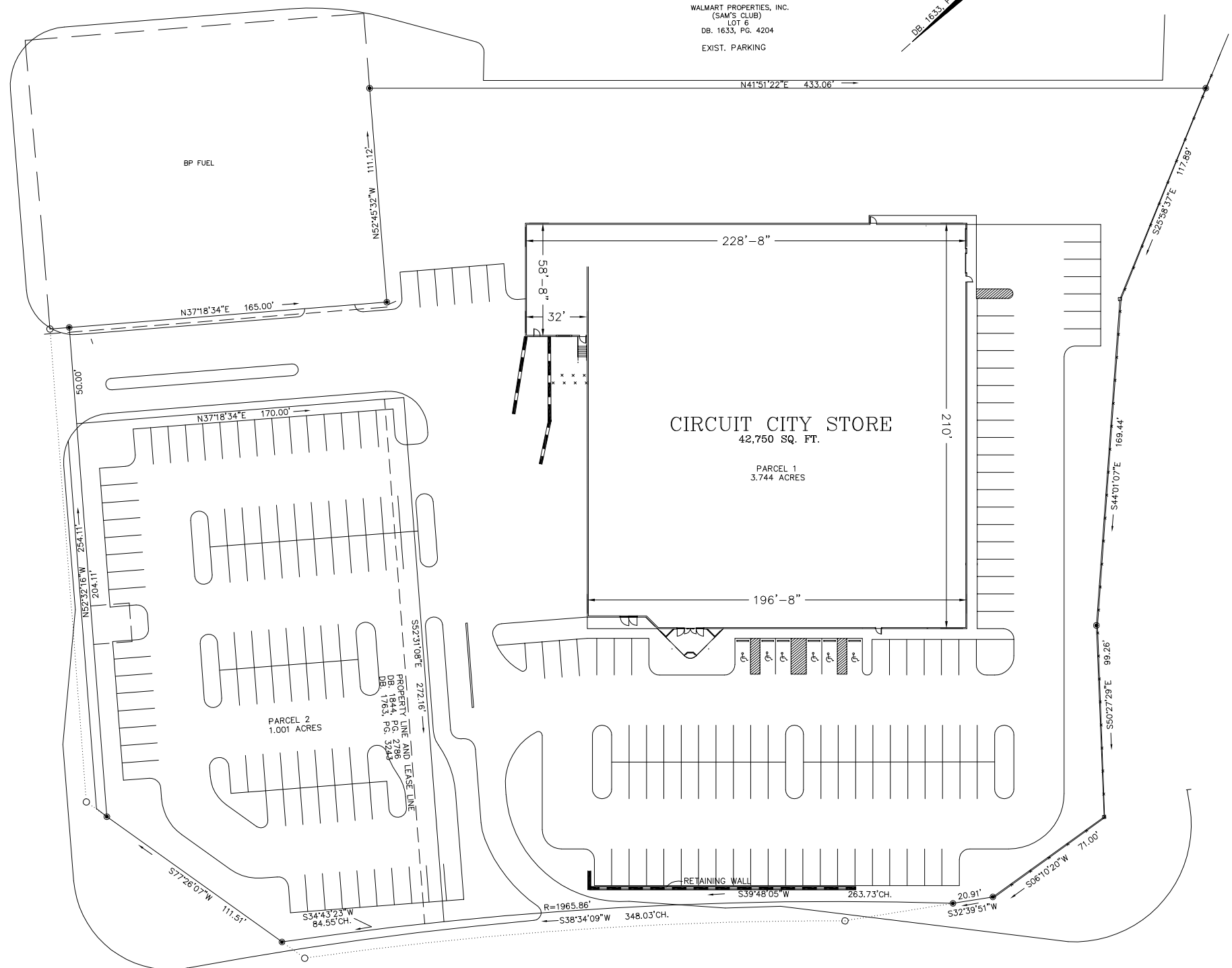


WALMART PROPERTIES, INC.  
(SAM'S CLUB)  
LOT 6  
DB. 1633, PG. 4204  
EXIST. PARKING

DB. 1633, PG. 4204

HANES MALL BLVD.



RAMP TO I-40

PARKING DATA	
PARCEL 1 PARKING:	113 SPACES
PARCEL 2 PARKING:	95 SPACES
TOTAL PARKING:	208 SPACES
TOTAL PARKING RATIO:	4.87 SPACES / 1,000 SF
ONLY PARCEL 1 PARKING RATIO:	2.64 SPACES / 1,000 SF

S. STRATFORD ROAD



NORTH

SCALE: 1"=30'-0"

REVISIONS	
No.	DATE
01	3-25-09

WINSTON-SALEM, NC